



Celebrating our 10th Anniversary 2008 - 2018



Knowledge Consulting

نولج للاستشارات

We help you focus on the main element of your business;
the PEOPLE element to drive business growing forward.

Our Partners



A message from the founder



How will my life change? The answer is: when you change. The only way it get's better for you is when you get better. Better is not something you wish for; better is something you become. ^{SEP}Jim Rohn

Success is a PEOPLE business and any organizational growth depends on the PEOPLE who work in it. We work as partners with our clients. What makes our work rewarding and challenging is the fact that we only succeed if our client succeeds.

This document will give you an overview about Knowledge Consulting (KC) HR, Learning, and Development Solutions. We value working with you as partner to achieve the desired results you seek. We are a team of professionals; each consultant focuses in specialized discipline to tailor and design the intervention and the instructional material based on client's requirements.

We at KC share with you the same PEOPLE development vision and we are dedicated to touch lives and transform organizations through the development of its PEOPLE.

This approach is very much in synch with the world best organization practices and trends. Today's successful organization such as Google, General Electric, and Disney started focusing on the PEOPLE element of marketing mix to ensure their continuous growth.

We understand and believe in the contribution of talented PEOPLE to the success of organizations; because they (the PEOPLE) possess a Heart, a Head, and Hands to feel, think, and perform the tasks to achieve the desired goals.

Therefore, it is our pleasure to participate in offering our services and contribute in the development of your PEOPLE.

Keeping PEOPLE well trained and motivated is vital in ordinary times makes even crucial in these tough economic times.

Developing your PEOPLE not only creates a unique skill set for organizations but it can also build real competitive advantage, through shifting the mindset toward the CUSTOMER (Internal and External). Armed with the appropriate skills, attitude and techniques, these Employees will stand out and see their organization through challenging situations.

We are always developing and seeking partnerships and associations to complete the set of competencies required by you our clients. Depending on your requirement, we provide you with the complete Organizational Development Solution utilizing our local and International TEAM.

Also, we assist in planning your team's development. We will be delighted to explore, identify needs, formulate solutions, implement and assure you success.

Thank you,

Hamza Taqi

Contact: +965 9968 4464

info@knowledge.com.kw



An education isn't how much you have committed to memory, or even how much you know. It's being able to differentiate between what you know and what you don't. -Anatole France

These are the programs we offered our existing clients. We tailor our programs toward your Vision, Mission, Core Values, and Overall Culture. That way we will ensure common language and immediate application of knowledge, skills and attitude in the work place. We tailor specialized programs for Secretaries, Induction programs for new recruitment, and program for Total Organizational Renewal, Total Retail Renewal, and Turning Low Performers to High using proven tools and methodologies.

1. Fish Philosophy
2. Reading People for Business Relations
3. Relationship Selling Skills
4. Corporate Selling Skills
5. Communication Skills
6. Behavioral Expert
7. Team Dimensions
8. Time Mastery
9. Marketing Fundamentals
10. Leadership Development

11. Situational Leadership II
12. Coaching Essentials
13. First Time Manager
14. Problem Solving and Decision Making
15. Strategic Planning
16. Strategic Thinking tool
17. Creativity and Critical Thinking
18. Artificial Intelligence for Humans
19. The Customer Experience
20. Segmentation Strategies
21. Effective Communications
22. Managing Teams
23. Turning Low Performers to High
24. Wealth Management Expert
25. Negotiation Skills
26. Business Report Writing
27. Presentation and Public Speaking
28. Change Management
29. We also organize staff open day events for all staff around motivation and team building
30. Supervisory Skills
31. Stress Management

**"Develop
a passion for
learning. If you do,
you will never cease
to grow."**

Anthony J. D'Angelo



Our Facilitators/ Consultants



Khoo Oon Theam

With more than 35 years of experience in the areas of leadership coaching, organization development (capacity strengthening), strategic planning and business processes, Oon Theam has founded, built and guided OTi to become one of the leading and largest local management consultancy operating in the region.

For more visit knowledge.com.kw



John Wright

A career Commercial Banker with a strong International background. His career spanned 43 years and included assignments in the UK, India, Sri Lanka, West Africa, Canada, Hong Kong and the United States before becoming Chief Executive of Oman International Bank for 7½ years thereafter Chief Executive of the Northern and National Irish Banks in Ireland for 5 years, a brief spell as Chief Executive of the Gulf Bank in Kuwait followed finally by 3 years as Chief Executive of Clydesdale & Yorkshire Banks prior to retirement.



Latifa AlSaleh

Latifa started her career in AlAhli Bank of Kuwait as a Relationship Officer in the Retail Banking Group. In 1993 she joined Bank of Kuwait and Bahrain as Investment Services Officer. In 1999 she was the Head of Marketing for Credit Rating and Collection Co. Latifa works closely with Loyak to develop their learning initiatives. She also consults for KIU to deliver value added project for the industrial sector.



Torill Iversen

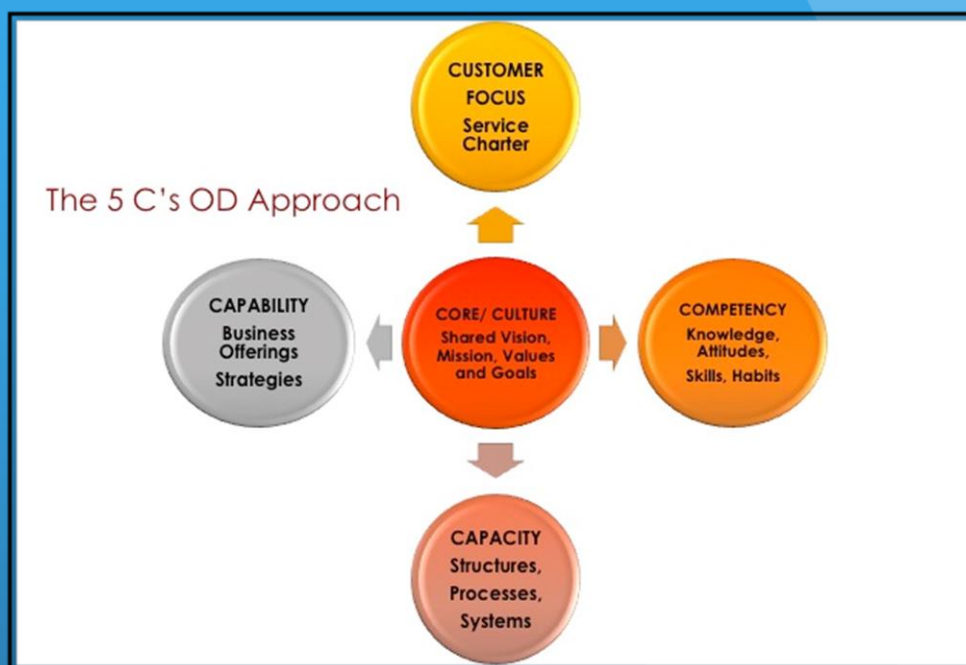
Torill has studied and used NLP for 25 years, and is responsible for the design of Mind Too's one year NLP Practitioner and NLP Master Practitioner educational program. She has comprehensive business experience from leadership and negotiations, both in Norway and abroad.



Hamza Taqi, MCIM

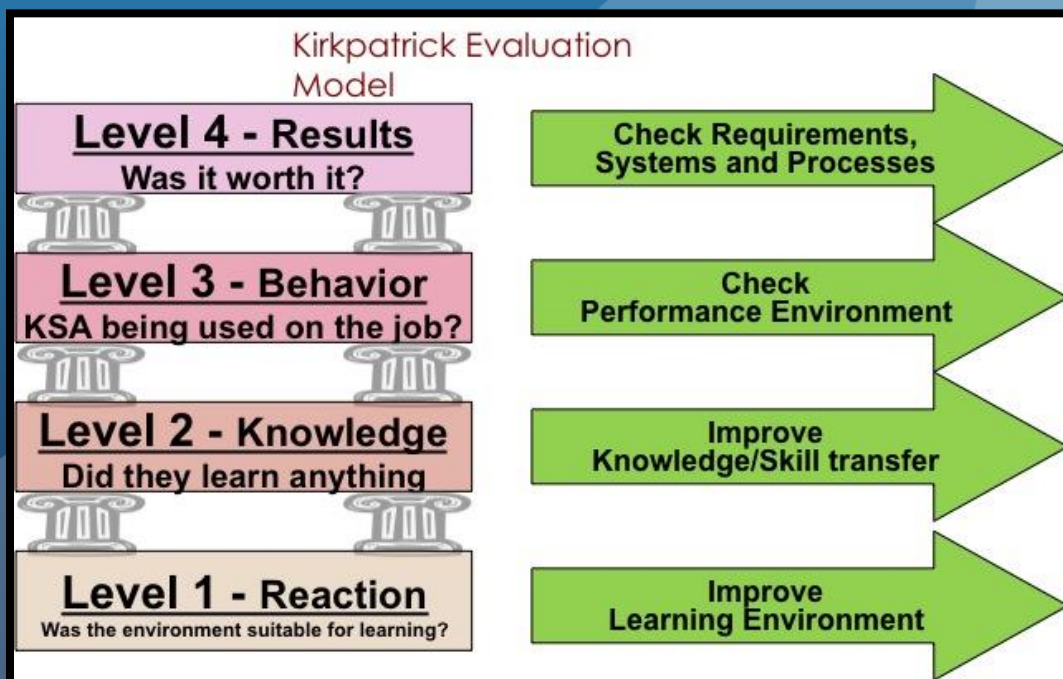
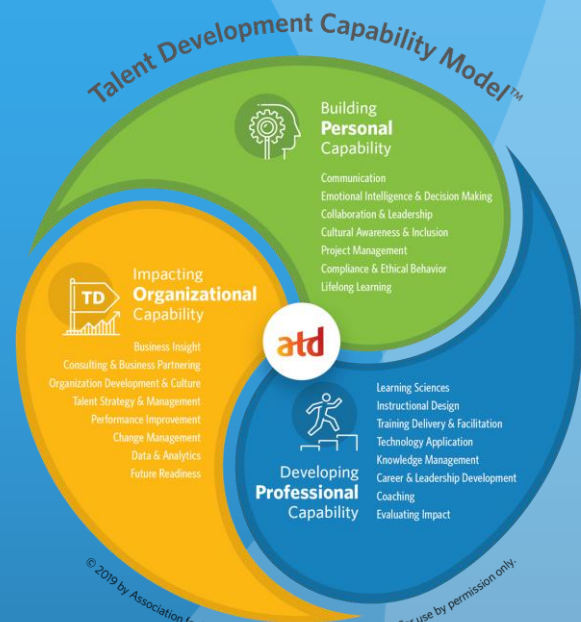
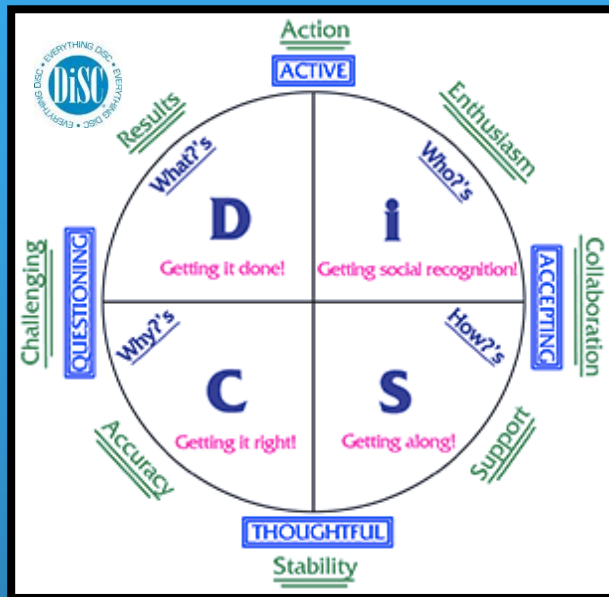
Human Performance Consultant, an Electrical Engineer graduated from the US early 1988, now after 20 years of working experience in the private sector within Kuwait yet exposed to multi cultural and International brands and businesses. He started to coach, train, and mentor in the IBS and Arabi Co as early as 1992. Infatuated with PEOPLE

Our Methodologies



Intervention Roadmap





Case Studies, Role-plays, Team Building Games & more

- **Experiential and Highly Interactive!**
 - The learners will be invigorated through our action learning activities that are designed to meet their different learning style preferences.
- **Up-to-date Application Models**
 - Data based interventions supported by technology of award-winning and validated psychometric instruments.
- **Innovative Training Design**
 - Our Consultants are certified practitioners of Creative Training Techniques™ to generate interest and interaction, as well as increase retention! The workshops are also designed with physical components based on learners' energy levels.
- **OD (Organisational Development)-Oriented**
 - The focus of our consultants is also to use OD (Organisational Development) intervention strategies to bring the learners together as a cohesive team.
- **Back-to-Work Application Focus**
 - Our application-driven workshops will assist you in practicing newly developed strategies/skills that can impact workplace results.



About Knowledge Consulting

Knowledge Consulting is focusing on PEOPLE as an important asset to enable organizations and its PEOPLE to prosper and achieve their potential in this highly competitive business world.

Our Vision: To empower PEOPLE and organizations to excel and grow their businesses through developing and focusing on the main element of the marketing mix the 'PEOPLE' element.

Our Mission: We will do our best to bring and design world class training & learning solution & methods through leading organizations, specialized in PEOPLE development and organizational development suitable to our clients' business environment.

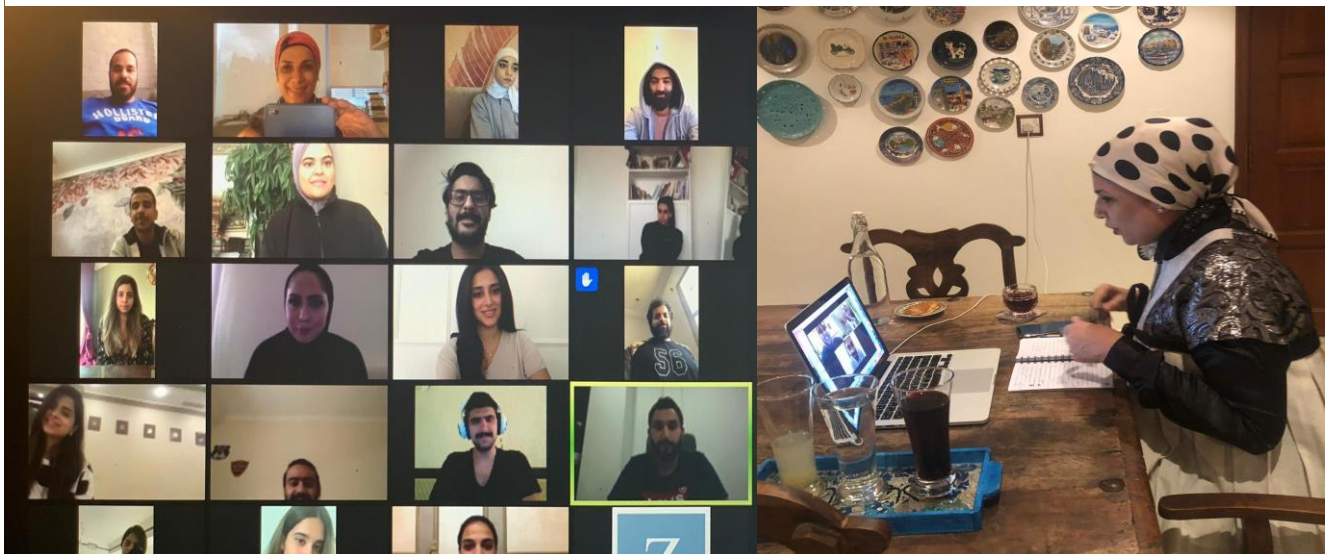
Our Core Values: We at Knowledge must adhere to a strict code of professional practice. These Core Values requires each individual to demonstrate:

- Integrity, bringing credit to the profession of Human Development
- Fairness and equity towards other training and human development professionals
- Honesty in dealing with customers, clients, employers and employees
- Avoidance of the dissemination of false or misleading information
- Current knowledge of the latest developments and competence in their application
- Avoidance of conflicts of interest and commitment to maintaining impartiality
- Treatment of sensitive information with complete confidence
- Commitment to negotiating business in a professional and ethical manner
- Knowledge and observation of the requirements of other codes of practice



Investment in your PEOPLE; it is key to your success

Highly engaging, interactive, and fun virtual learning experience



Our Commitment

We consider our intervention be it training or others as an important assignment and assure you that our expertise and extensive experience in Organisational Development, training and coaching would be devoted to meet your specific needs.

Thank you

For Inquiry please email
Latifa AlSaleh on: Latifa@knowledge.com.kw or
call +965 99994276 or 9968 4464

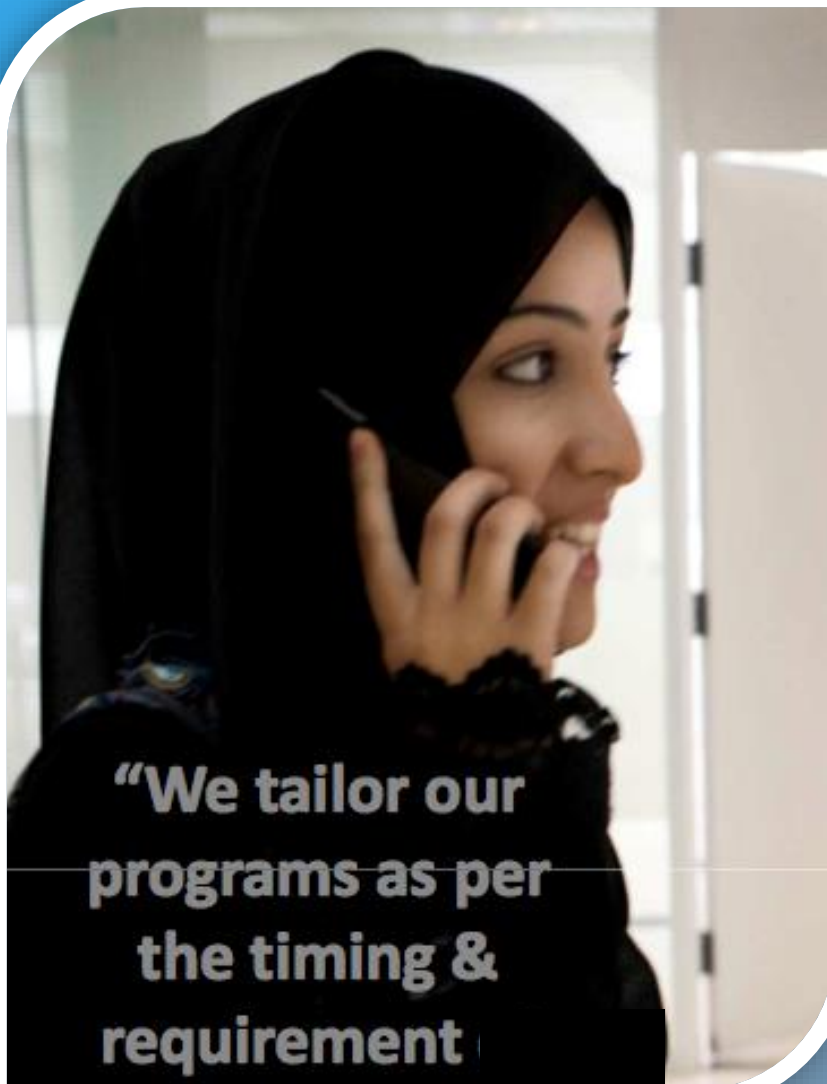


Talent Solutions



Putting PEOPLE First

© Knowledge Consulting Co. 2007- 2020



**"We tailor our
programs as per
the timing &
requirement"**



Mutawa & Qazi BLDG, Fahad AlSlem St, Office # 118
Kuwait City

Contact: +965 2245 1408 or +965 9968 4464

www.knowledge.com.kw or email: info@knowledge.com.kw